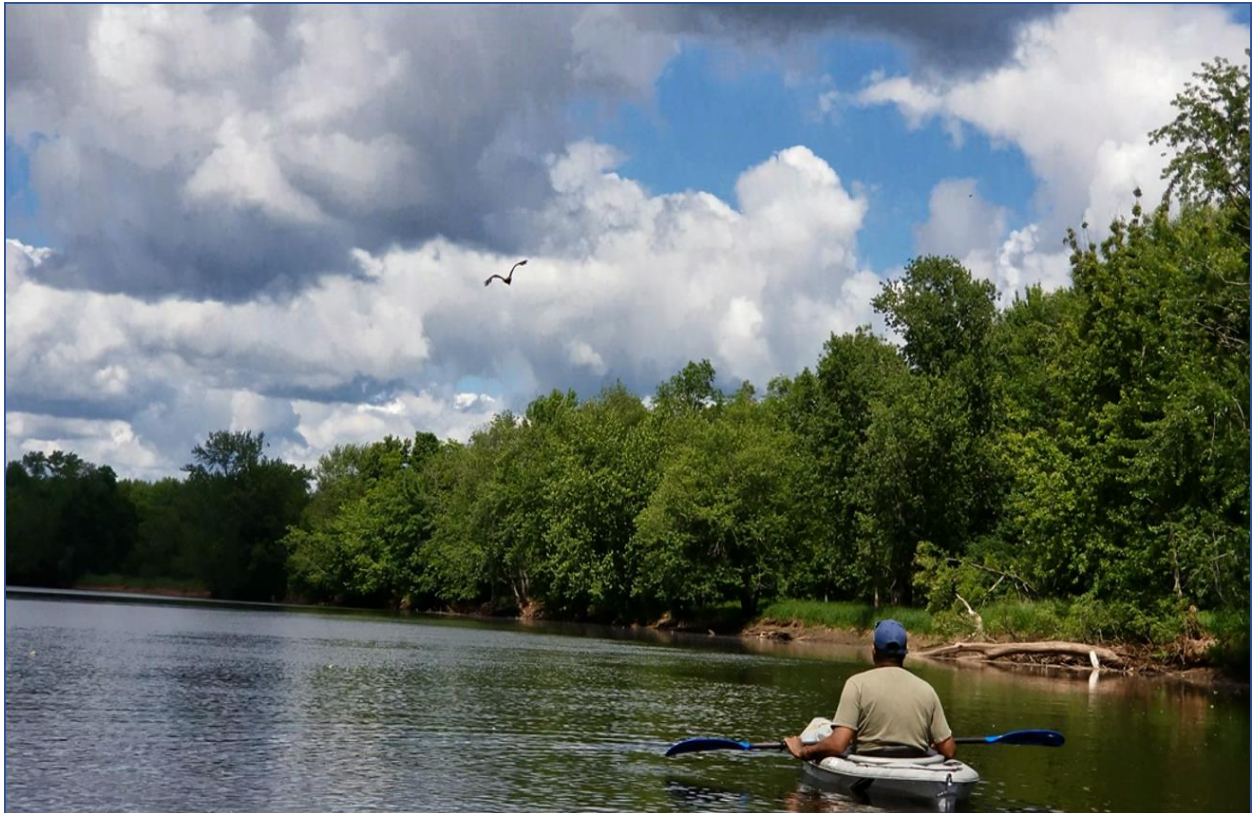


2018 BLACK RIVER MAPPING



2018 BLACK RIVER MAPPING

Section 1

River Segment: Lowville to Castorland

Length: 11.7 Miles

Beginning Boat Launch: Beach's Bridge

Ending Boat Launch: Route 410, Castorland

Mapping Dates: 6/8/18 & 6/15/18

Boonville Water Gage Height: 6/8/18 @ 12:00 – 4.39, 6/15/18 @ 12:00 – 4.25

Watertown Water Gage Height: 6/8/18 @ 12:00 – 3.54, 6/15/18 @ 12:00 – 3.15



Section 2

River Segment: Castorland to Carthage

Length: 10 Miles

Beginning Boat Launch: Route 410, Castorland

Ending Boat Launch: West Carthage

Mapping Dates: 6/29/18

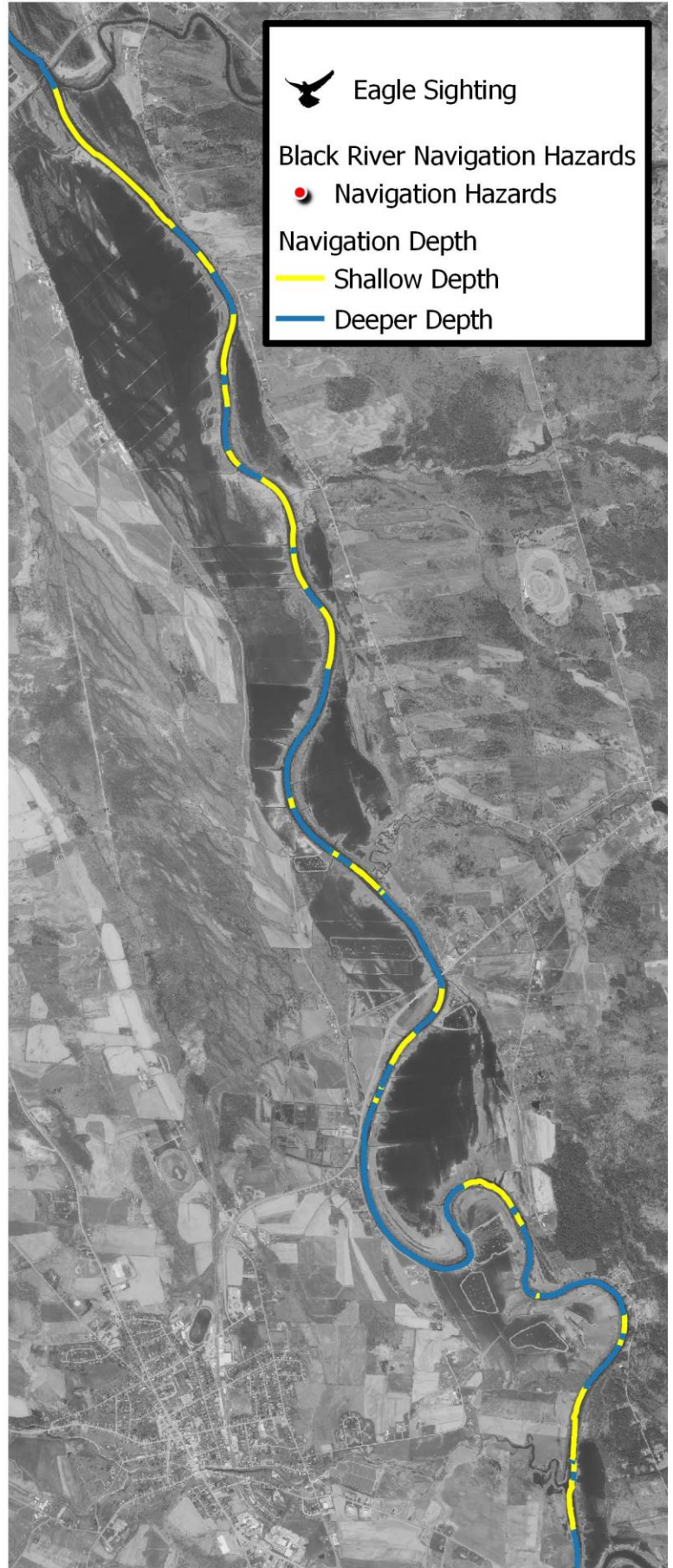
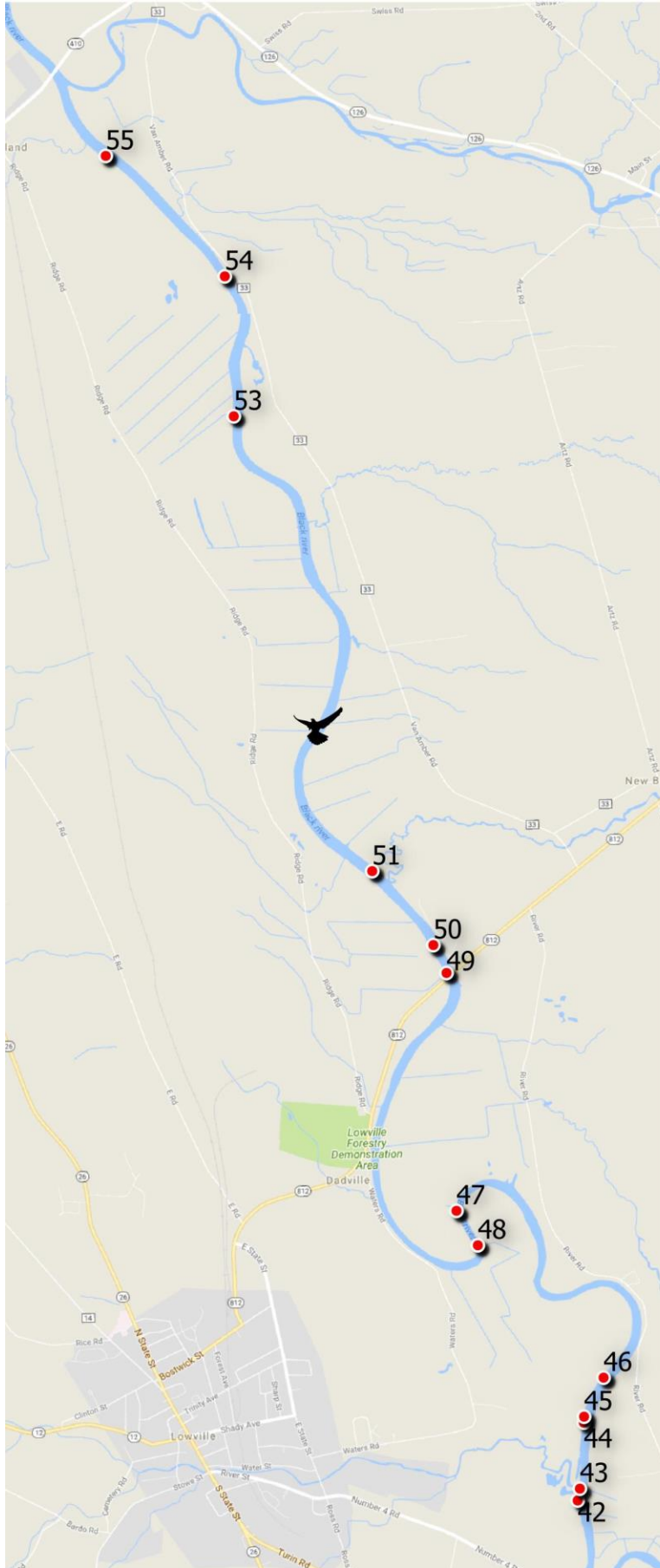
Boonville Water Gage Height: 6/29/18 @ 12:00 – 4.12

Watertown Water Gage Height: 6/29/18 @ 12:00 – 3.31



BLACK RIVER MAPPING

Lowville to Castorland



BLACK RIVER NAVIGATION HAZARDS

Lowville to Castorland



42

Boulders



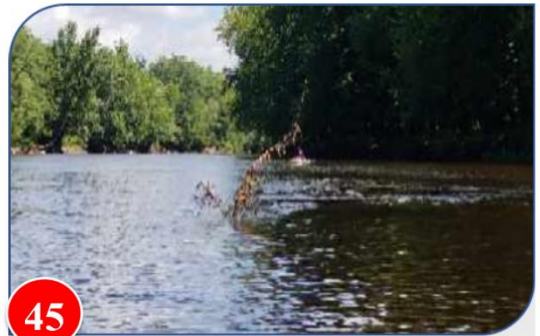
43

Gravel/Shoals



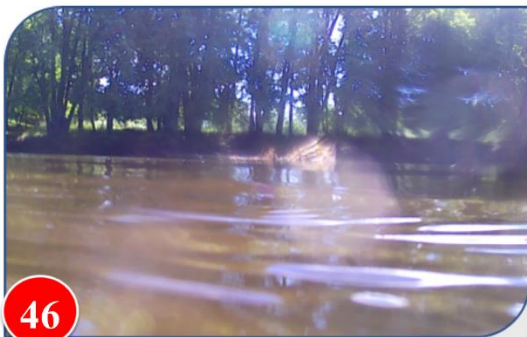
44

Debris



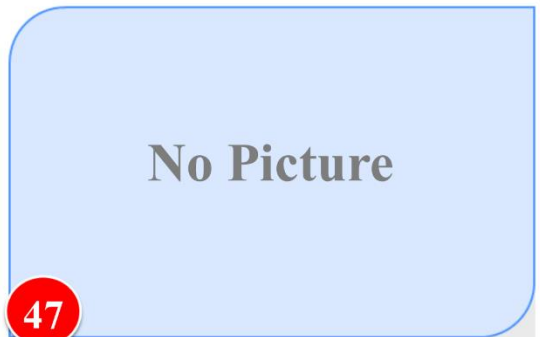
45

Debris



46

Debris



47

Debris



48

Debris



49

Boulders/Abutments

BLACK RIVER NAVIGATION HAZARDS

Lowville to Castorland



50

Debris



51

Debris



53

Debris



54

Boulders

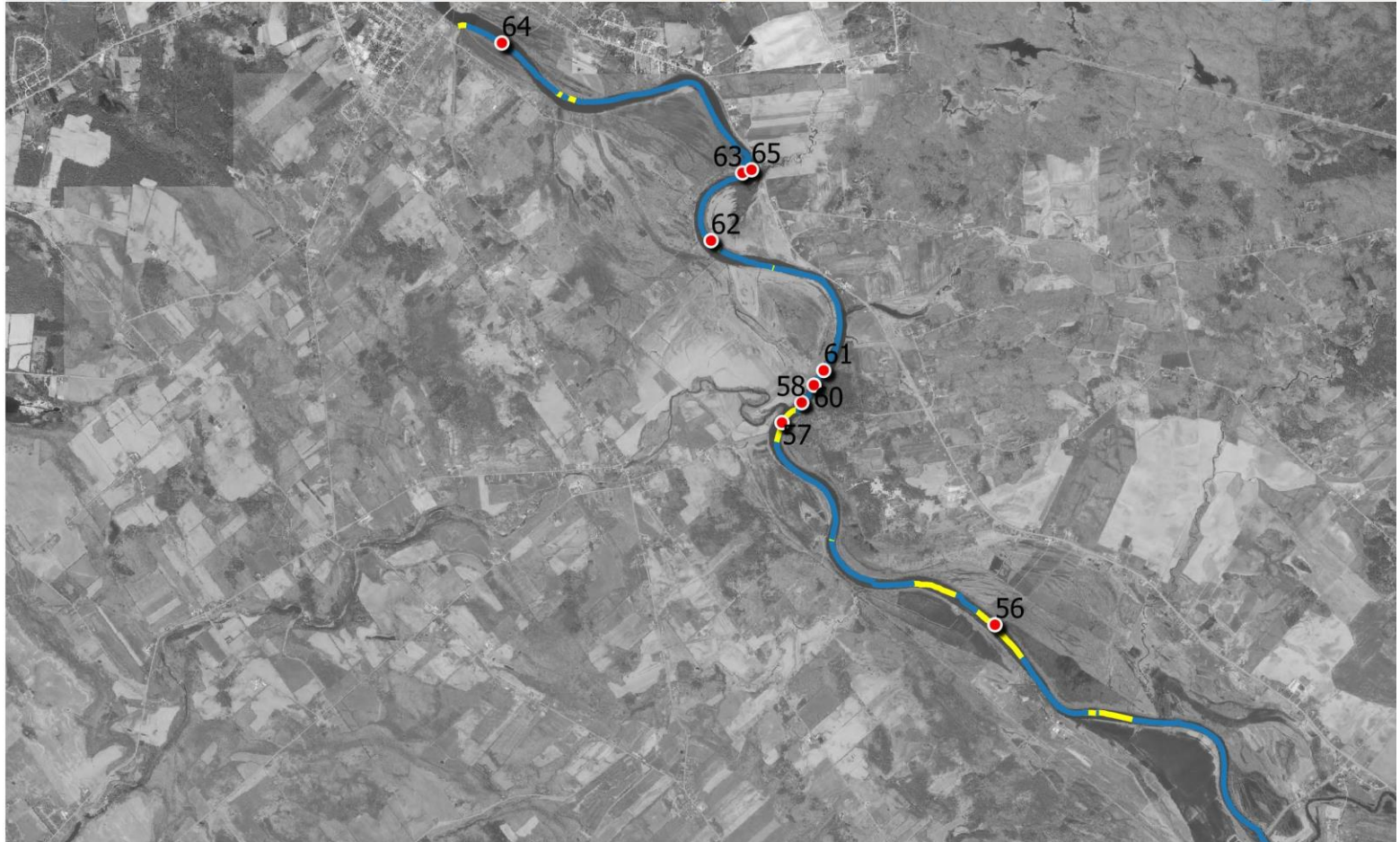
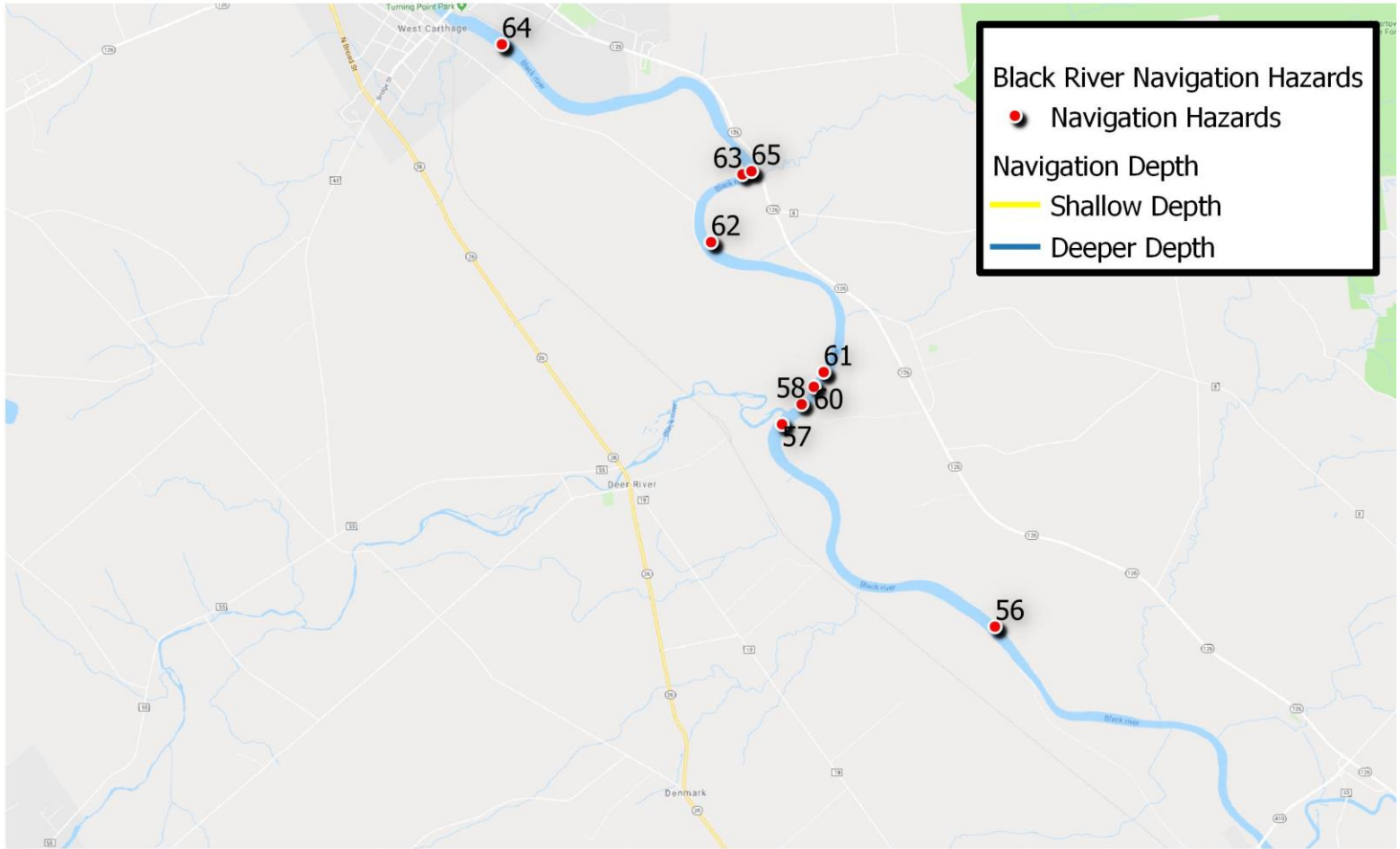


55

Piles

BLACK RIVER MAPPING

Castorland to Carthage



BLACK RIVER NAVIGATION HAZARDS

Castorland to Carthage



56

Shoals



57

Debris



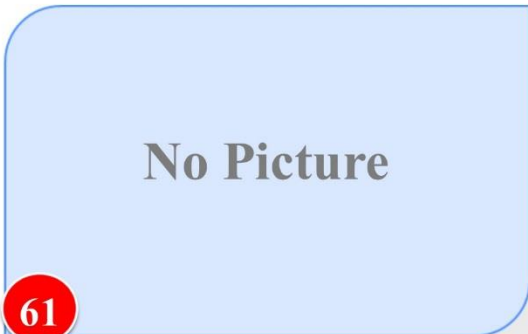
58

Debris



59

Debris



61

Debris



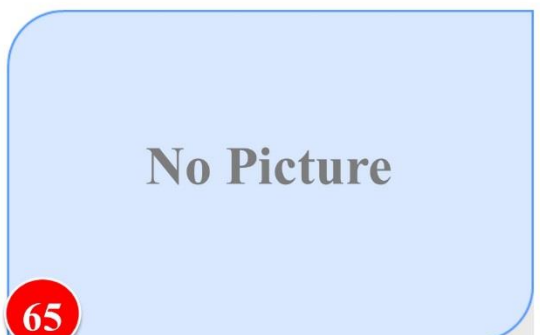
62

Debris



63

Debris



65

No Picture

Shoal/Boulder

Dangerous shoal/boulder that extends out into the river.

BLACK RIVER NAVIGATION HAZARDS

Castorland to Carthage



64

Debris

2018 BLACK RIVER MAPPING

Information

Equipment

- Bluetooth Depth Finder
- Bluetooth GPS
- GIS Cloud Mobile Data Collecting App
- Kayak Rig (For Depth Finder & GPS)

Navigation Hazards

- Woody Debris
- Gravel Shoals
- Boulders/Abutments/Piles
- Shallow River Depths
- Always Changing Debris Areas

Movement Vulnerability

Debris (Woody) – High vulnerability of being moved by the river flow.

Gravel Shoals – Moderate vulnerability of shifting patterns in the river.

Boulders/Abutments/Piles – Low vulnerability of being moved by the river flow.

The river depths are always changing, so it is hard to predict when certain areas will become a hazard to boats, especially for motorized boats. Also, navigation hazards, like debris, can change from month to month in some cases, depending on river flow at different times throughout the year. It is important to understand that this document is just for reference and that these hazards are always changing, even the shoals.



Mapping was completed with the assistance of Mickey Dietrich, RACOG Municipal Management Consultant, NYS Tug Hill Commission and intern Seth Lapp.